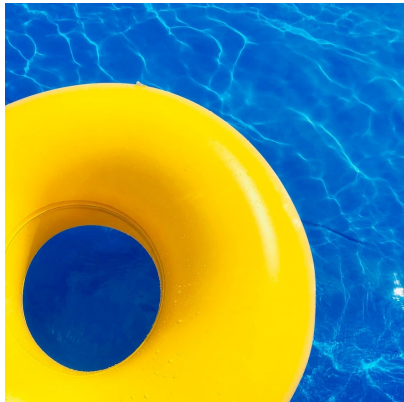


Newsletter Update

⚠ Landlords, please forward to your tenants or supply us with their email.

📅 July 1st- Don't forget your HOA dues!



Back In the Swim of Things

The Salem Park pool is officially open and all pool passes must be renewed this year. If you have not already renewed your pass, please print and fill out the form from last month's newsletter or renew it in person at the pool. Only those with proof of Salem Park Residence may receive a pool pass.

The pool will be operating under limited hours due to lifeguard availability. Please check your email inbox for pool hours on a bi-weekly basis.



Upcoming Events

The SPHOA is currently planning community events for this summer and fall season. We are hoping to finalize plans for a **Community Yard Sale** and a **Summer Pool Party**. Keep checking our monthly newsletter for updates regarding these events. Until then, start deep cleaning your clutter and get your tan ready!

Trash Talk

As a reminder, **garbage bins should be put out between Sunday at 6pm and Monday at 6am. Trash cans need to be removed by Monday afternoon.** Trash cans left out any longer makes our mail carrier and landscapers unable to do their job properly. Garbage may not be dumped mid-week.

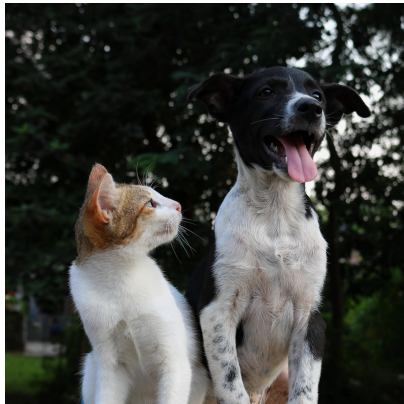
Anything bulk may be set out after arranging bulk pickup with Waste Management at 1-800-869-5566. Electronics can be recycled at 1001 Clairemont Road, Carlisle PA.



Summer Sea-sun

Don't forget your architecture form approval before performing any exterior improvements. Per the by-laws, the council has the right to ask any owner to remove improvements at the owner's expense if unapproved improvements are made. If you require a form, please email us.

Now that the weather is finally warm, please be proactive about maintaining our outdoor property. Per Hampden Township by-laws, grass must be maintained at a reasonable height. If you are unable to mow your lawn, please email us and we can arrange someone to mow your yard for a cheap fee.



In Case You Fur-got

Dogs are NOT to be walked on private property. Dogs should be leashed at all times and their waste needs to be picked up immediately, per Hampden Township Ordinance 98-7.

We've been having serious issues with unleashed pets on private property and leaving waste in public. These are not HOA laws, **these are township laws.**



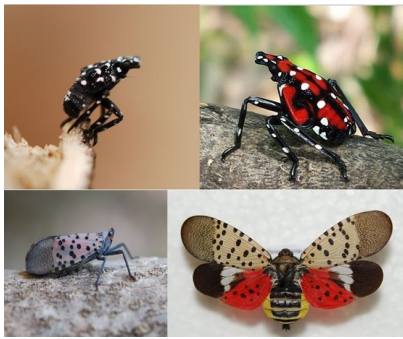
Safety Reminders

The speed limit in our community is 20mph. We have children running around during the summertime and we would like to keep them safe.

Parents, please have conversations with your children about street safety. Too many of our children have been unaware of their surroundings and playing unsafely in the middle of the road.

Please park as close to the curb as possible. EMS vehicles have a hard time navigating our roads to get to an emergency and some turns have become hazardous.

Are you interested in being on the Salem Park HOA board? We are looking for homeowners to join the committee. We are seeking people to fulfill the duties of Building & Grounds and Architecture. Please reach out if you are interested in contributing to our HOA community.



Spotted Lanternflies!

Spotted lanternflies are a seriously invasive pest, which stresses the plants that it feeds from. The lanternflies are getting fairly bad here so let's all do our part to get rid of them

- Kill any adult lanternflies you find.
- Check your trees and plants at dusk.
- Check trees, bricks, stone, and other surfaces for egg masses.
- Use pest spray on baby lanternflies.

SALEM PARK HOMEOWNERS ASSOCIATION
IF YOU ARE INTERESTED IN A SPHOA COUNCIL POSITION AS GROUNDS DIRECTOR OR ARCHITECTURE COMMITTEE, PLEASE REPLY TO THIS EMAIL.